



QBC has grown to establish three major divisions.

These divisions offer strategic support services which are cost-effective and ensure on-time delivery backed by unrelenting excellence.

CONTENTS

About Us

- Message from the Board
- Who is QBC
- Mission
- Our Team

Civil Contracting

- Roads / Highways & Interchanges
- Roads / Mechanical Subbase
- Water Projects
- Infrastructure & Drainage Projects
- Micro-Tunneling Works
- Horizontal Directional Drilling (HDD)
- Power Cable Projects
- Earth Works
- Trenching Works
- Buildings

Production Division

- Readymix Plants / Projects
- Asphalt Plants / Projects
- Precast Products
- Steel Engineering Workshop
- Crushers
- Road Marking

Trading Division

- Heavy Equipment Department
- Lifting Department
- Medium & Light Equipment and Attachments
- After-Sales Department & Spare Part
- After-Sales Department / Service & Maintenance

QHSE

- Quality & Achievements
- Health & Safety
- Traffic Management
- Environment

COMPANY OVERVIEW

"A world-class enterprise of civil engineering,
materials production and construction equipment"



Message from the Board

As we enter our company's fifth decade, the horizon looks promising for QBC's continued growth. With the nation's most prestigious projects in our portfolio, we look forward to the challenging developments yet to come under Qatar's National Vision 2030.

We are thankful that QBC's size and financial weight enable us to pursue the largest, most complex endeavours. With an unrelenting pursuit of excellence, our number one goal is to fulfill clients' project requirements. To do so, we uphold quality, health, safety and environment as top priorities.

The loyalty of our clients is a solid indication that we deliver the finest construction, production and trading services by maintaining open communication throughout all operations.

As a privately-owned organization, QBC ensures the utmost flexibility in decision-making and growth. This has also allowed us to embed a deeper culture of teamwork and commitment among our staff, as well as diligence, transparency and social stewardship.

Thank you for your interest in QBC. Please browse our profile for an insight into what gives QBC its exceptional reputation in Qatar's construction industry.

مع دخول شركتنا عقدها الخامس، يبدو الأفق واعداً بالنسبة إلى النمو المضطرد لشركة البناء القطرية. فمع قيام شركتنا بتنفيذ أكبر المشاريع في البلاد، فإننا نتطلع قدماً إلى أن نكون على مستوى التطورات والتحديات التي ستواجهنا في إطار الرؤية الوطنية لدولة قطر لعام 2030.

خلال سعيينا الدؤوب والمتواصل لتحقيق التميز، يتمثل هدفنا الأول في تلبية متطلبات مشروعات عملائنا. ولتحقيق ذلك، فإننا نتمسك بعناصر الجودة والصحة والسلامة والبيئة كأهم أولوياتنا.

هذا ويشكل ولاء عملائنا مؤشراً راسخاً على قدرتنا على تنفيذ وتقديم أفضل الخدمات في مجال البناء والانتاج والتجارة، وذلك من خلال التواصل الدائم مع عملائنا في نطاق كافة عملياتنا.

كشركة خاصة، تتمتع شركة البناء القطرية بأعلى درجات المرونة في عملية اتخاذ القرارات وتحقيق النمو، الأمر الذي مكّننا من ترسيخ، في نفوس العاملين لدينا، ثقافة العمل كفريق وثقافة الالتزام، وذلك إلى جانب تبنّي الاجتهاد والشفافية والريادة الاجتماعية.

وفي الختام، نشكركم على اهتمامكم بشركة البناء القطرية وندعوكم إلى الاطلاع على ملف شركتنا لكي تتعرفوا عن قرب على كافة العناصر التي أعطت وتعطي شركة البناء القطرية السمعة الاستثنائية في قطاع البناء في دولة قطر.

"DEDICATED TO QATAR'S INFRASTRUCTURE"

WHO IS QBC

Qatar Building Company (**QBC**) began as a contractor in 1971; it is now a world-class enterprise of civil contracting, materials production and construction equipment. Headquartered in Doha, the company maintains "Grade A" classifications in each contracting category of the Government Central Tenders Committee (CTC) Qatar.

QBC is a privately-owned organization that serves government agencies, international contractors, gas majors and private developers. An uncompromising reputation of quality, consistency and expertise has ensured continuous growth and secured customer loyalty.

Celebrating over **48** YEARS

MISSION

- To uphold our reputation as the premier choice for Qatar's infrastructure needs, Qatar Building Company (QBC)'s mission revolves around five principle goals:
- 1 To implement sustainable engineering techniques and business best practices that ensure top-quality projects are delivered on-time and within-budget.
- 2 To maintain world-class support services through QBC's production and trading divisions.
- 3 To cultivate long-term, mutually beneficial relationships with customers, engineers, project managers, subcontractors and all stakeholders.
- 4 To uphold the highest standards of Quality, Health, Safety and Human Values for all team members.
- 5 To foster our community and promote environmental awareness by engaging in outreach activities on local, regional and international levels.

OUR TEAM

“ Competence, Experience, Passion.”

While maintaining a series of prestigious international memberships and certifications (including ISO 9001:2008, ISO 14001:2004, ISO 29001:2010 and OHSAS 18001:2007), QBC continuously invests in team development Quality, Health, Safety & Environment (QHSE) and state-of-the-art machinery & equipment to ensure that each project, product and service is delivered with excellence and care for the community.

At QBC, we retain personnel for decades. We treat our team and our clients with the respect of a great family, where everyone prospers. Our staff qualifications cover all commercial and engineering disciplines, creating a wealth of construction industry knowledge



CIVIL CONTRACTING DIVISION

"Grade A in every category of the Central Tenders Committee"

QBC has played major roles in the nation's most prestigious projects including D-Ring Interchange Road, Energy City, Msheireb Downtown Doha, Cultural Village, Education City, Lusail Development and dozens more.



■ ROADS / HIGHWAYS & INTERCHANGES ■ ROADS / MECHANICAL SUBBASE ■ POWER CABLE PROJECTS ■ INFRASTRUCTURE & DRAINAGE PROJECTS



■ MICRO-TUNNELING WORKS ■ HORIZONTAL DIRECTIONAL DRILLING (HDD) ■ WATER PROJECTS ■ EARTH WORKS ■ TRENCHING WORKS ■ BUILDINGS



Project : GTC 081/12-13
Extension of Highway 55 Temporary Truck Route
Section A and B (Dukhan Highway to Al Khor Coastal Road)



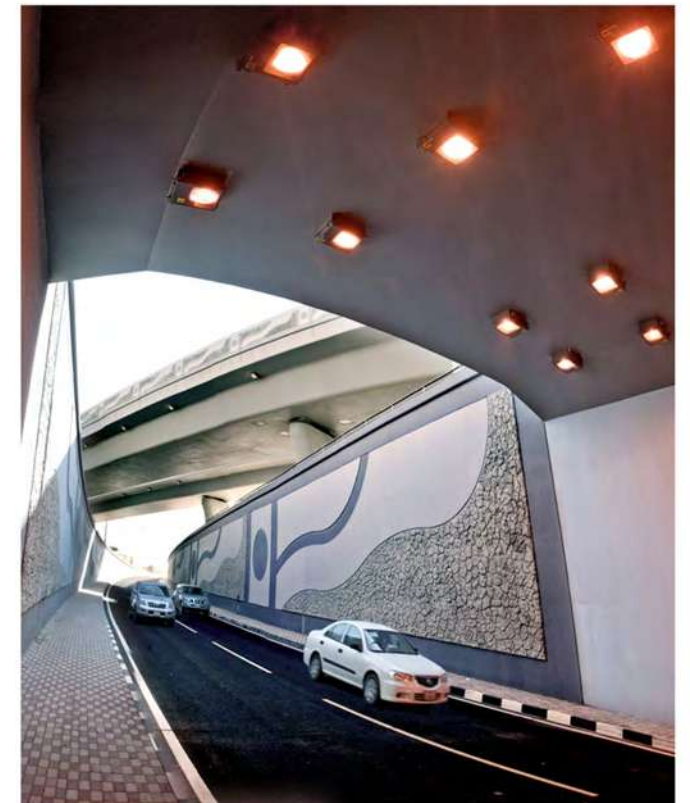
Client : Public Works Authority (Ashghal)
Value : QR 290.00 million
Main Contractor for construction of 22,7 km of
new four lane dual carriageway and seven roundabouts

ROADS / HIGHWAYS & INTERCHANGES



- Two steel bridges (46m & 93m long)
- Reinforced earth (MSE) retaining walls
- Earthworks: 683,000m³ fill and 356,000m³ cut
- 450,000m² granular subbase & asphalt pavement
- Stormwater drainage
- Street lighting, road markings and signs
- 7.9km precast kerbing
- 3,500m² precast paving blocks











Client : Public Works Authority (Ashghal)
Value : QR 668.93 million
Construction of 28.7 km. of Rural Arterial Road
(2 + 2 lanes + Cycle Track) from
Al Shihaniyah to Al Jemailya via Al Otouriyah



- 13 No. Roundabouts • 10 No. T- Junctions • 2 No. access roads with combined length of 1.3 km
- 2 No. underpass camel crossings • 1 No. overpass pedestrian bridge • Earthworks – 267,000m³ excavation & 1.2 million m³ fill 226,000m³ granular base 557t asphalt • 104 km. PC kerbs, 3,320m² PC paving blocks • Traffic signs, street lights & road markings • Stormwater drainage • 18.5 km. DI pipe for potable water c/w 36 No. valve chambers • 19 No. new electricity substations and 96km. cables QNBN, Ooredoo, QAF, SSD & ITS works • Landscaping • Fencing, safety barriers and camel grids





Client : LREDC (Lusail Real Estate Development Company)
Value : QR 358.91 million

- Main roads and pedestrian areas ● Retaining walls, bridge and pergola structures (grade separated junction)
- Traffic gantries and signals ● Roadway lighting, signage, markings and safety barriers ● Foul sewage, irrigation, storm water drainage, potable water networks and associated pumping stations
- Electrical distribution network and associated substations ● Telecommunication, ELV, SSD and SCADA duct bank network

Subbase is laid using sensor pavers to attain the best quality standards to comply with latest requirements







New potable water pump house and control building along with all necessary civil, mechanical, electrical, control, fire protection and instrumentation works to accommodate and operate fifteen pumps with total capacity of 5.50m³/s:

- 4 VFD pumps + six future slots - 425 l/s @ 55. m head
- 4 VFD pumps + one future slot - 250 l/s @ 55. m head









Client : Public Works Authority (Ashghal)

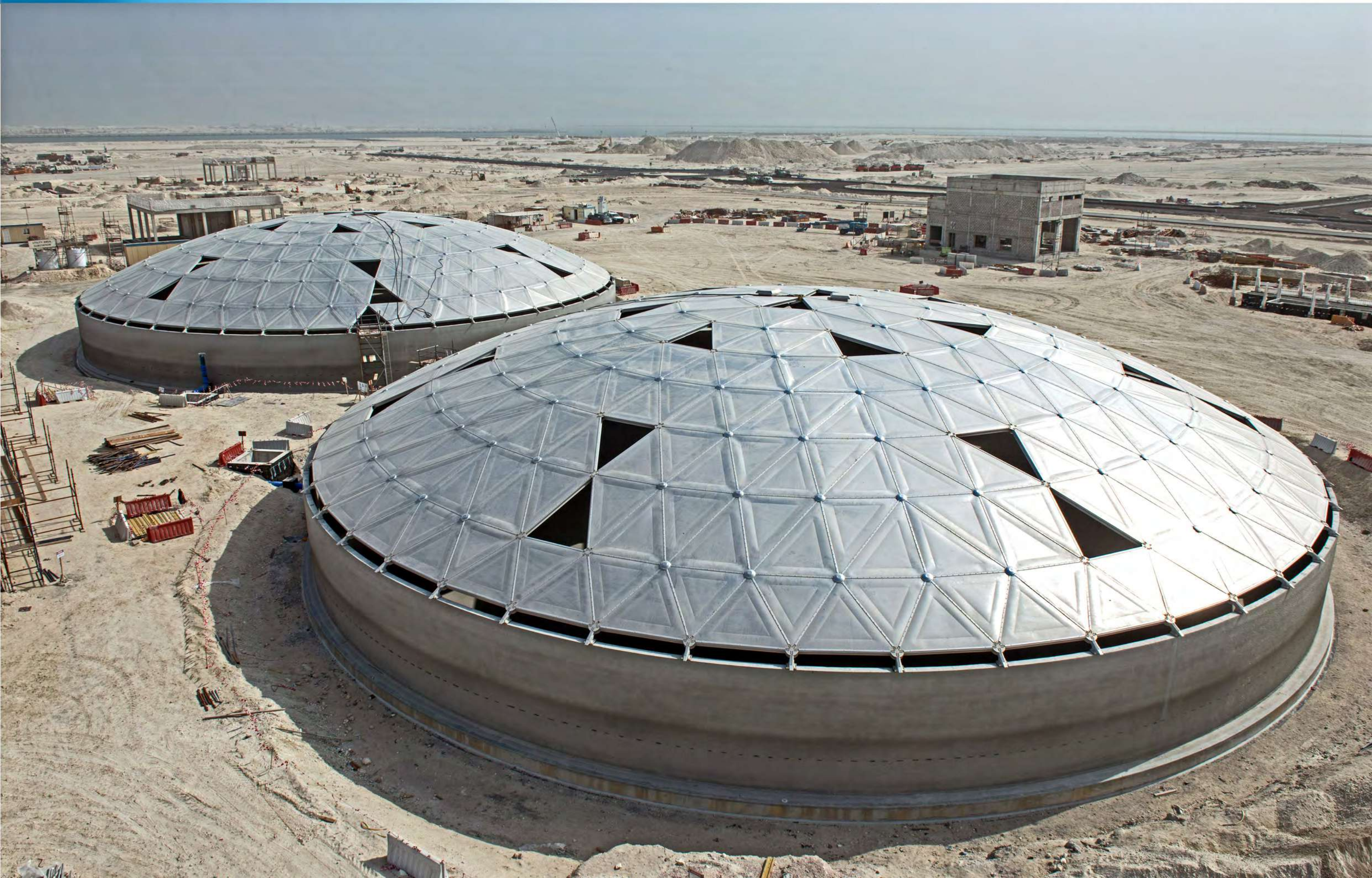
Value : QR 573.48 million

Earthworks – 163,000m³ cut and 163,000m³ fill Pavement • 213,000m² gravel base layers and 469,000m² asphalt layers, 123km. kerbs, 263,000m² PC block paving and landscaping • Street lighting, traffic signs and road markings • Surface water drainage including 1,260m. pipes by microtunneling • Foul sewers including 1,880m. pipes by microtunneling • 12,3km. TSE pipe network c/w 113No. valve chambers • 11,1km. potable water pipe network c/w 111No. valve chambers • Electricity networks Ooredoo & QNBN networks and ITS System



Client : State of Qatar , Value : QR 1.6 billion







CP - 678 / 3
Construction of twin rising rain pipeline (2x1200 Ø)
from sewerage pump station PS 25

Client : Public Works Authority (Ashghal)
Value : QR 268.40 million

- Surface water and groundwater trunk sewers, a balancing tank and an outfall tunnel
- 10,962m. pipelines in open trench 6,449m. pipelines by microtunneling
- 186 No. manholes RC attenuation tank of 50,500m³
- c/w mechanical & electrical installations.



Client : Public Works Authority (Ashghal) Main Contractor : Marubeni Corporation
QBC Value : QR 342.00 million

- TSE Pump Station (10.0 m³/sec capacity) and rising main pipelines to convey TSE water back to Doha area (civil works) • TSE Pump Building • Generator Building
- Sewerage pipeline pump station • Stormwater drainage • Pump Station • 600m of 300Ø DI discharge pipeline 106 No. valve chambers • Roads • Car parks
- Perimeter security fencing with electric sliding gate • 54 km. DI pipelines (1600 Ø - 600 Ø)

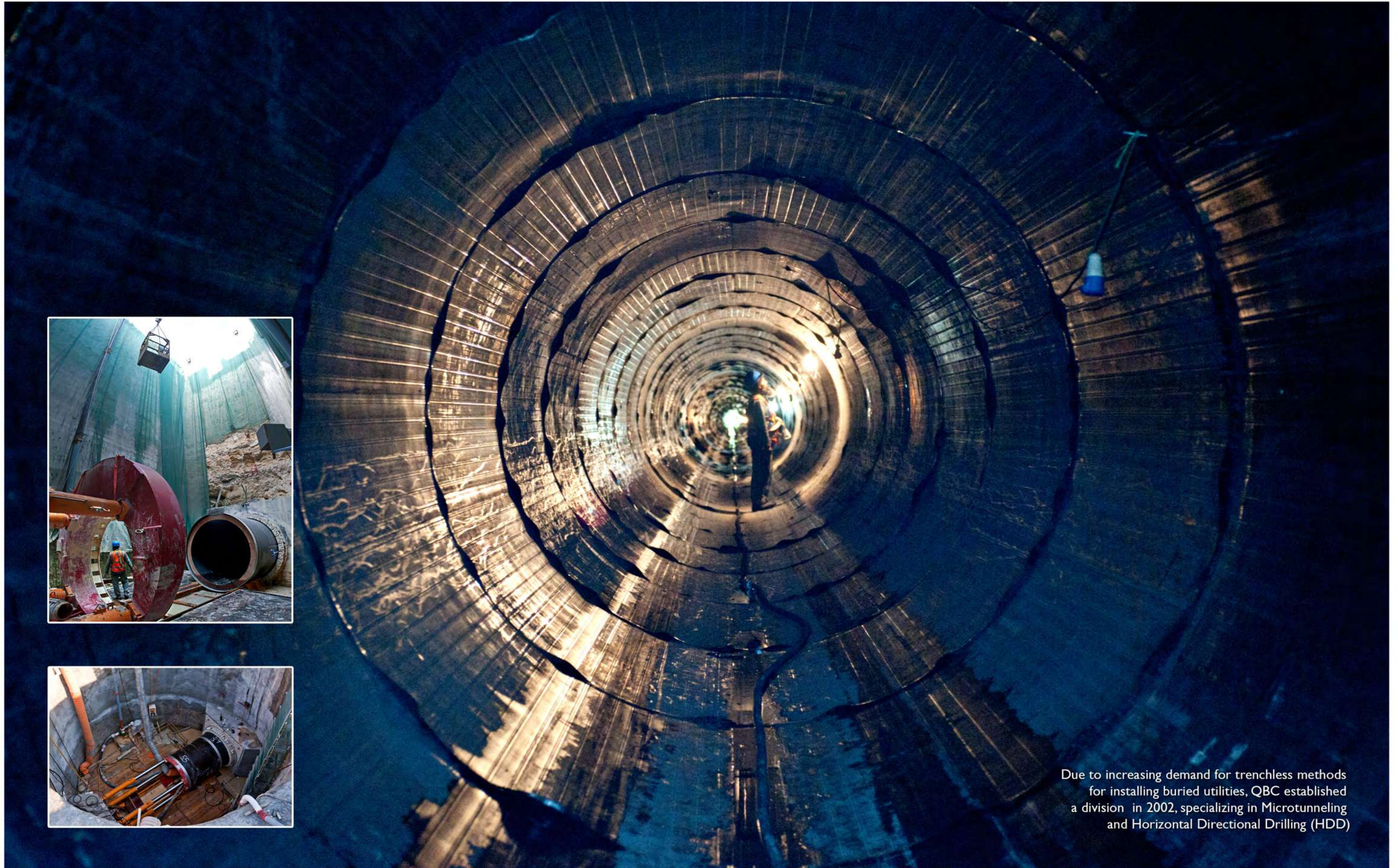


Client : Public Works Authority (Ashghal)

Value : QR 57.50 million

Construction of gravity-flow sewerage works involving :

- 23.5km of VC sewers by open-cut trench
- 1.5 km. of sewers by microtunneling
- 760 No. in-situ concrete manholes
- 1050 No. house connections
- 15.5 km. of lateral connections

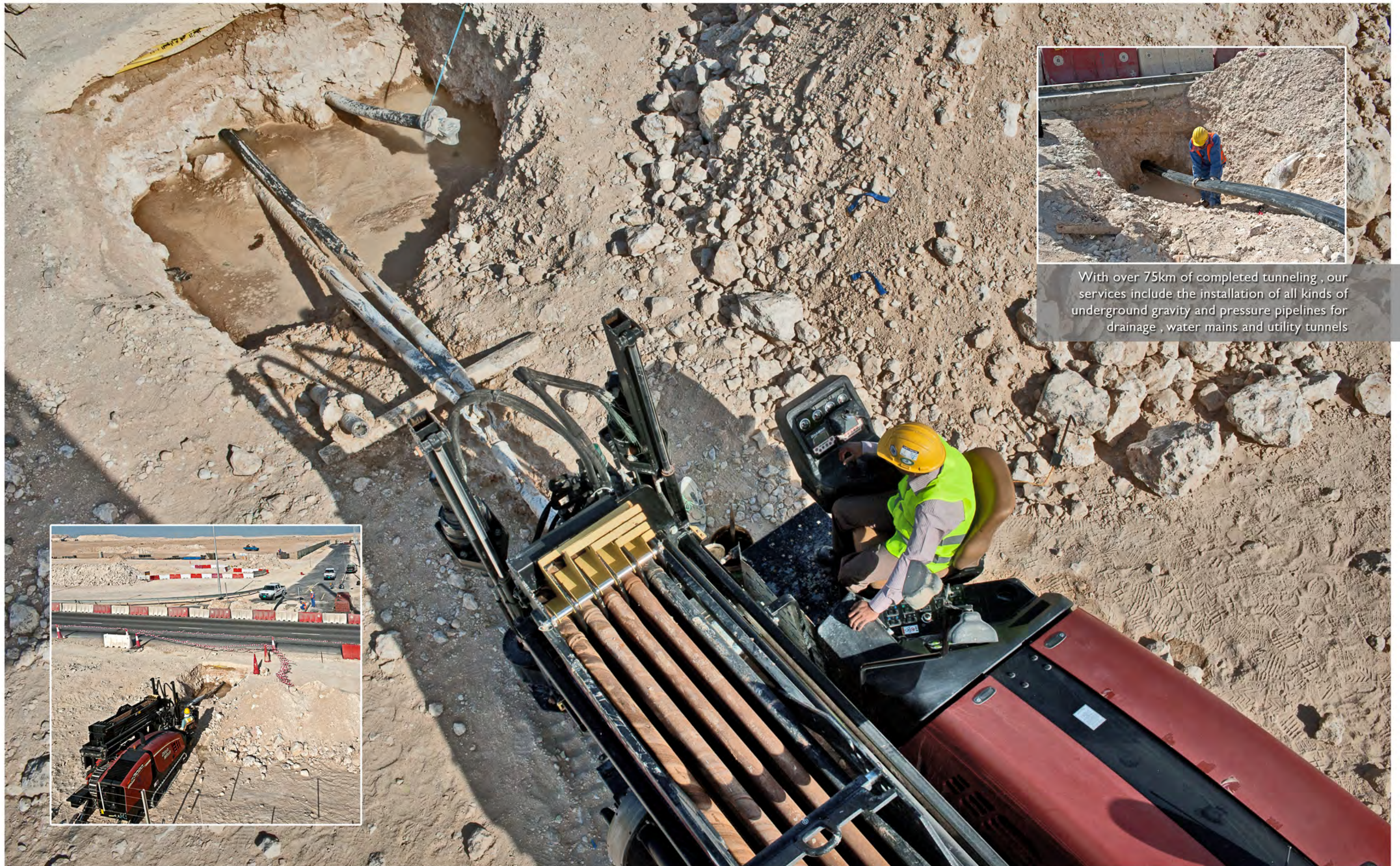


Due to increasing demand for trenchless methods for installing buried utilities, QBC established a division in 2002, specializing in Microtunneling and Horizontal Directional Drilling (HDD)

MICRO -TUNNELING WORKS

QBC is now considered the largest self-contained microtunneling company in the GCC and is able to install a complete range of pipe diameters from 150mm to 3000mm using trenchless methods





With over 75km of completed tunneling , our services include the installation of all kinds of underground gravity and pressure pipelines for drainage , water mains and utility tunnels



QBC's infrastructure projects include the construction of power distribution networks involving EHV, HV, MV and LV installations. All civil works; Such as trenching, bedding and backfilling are carried out by QBC, while cablepulling is carried out by Kahramaa approved subcontractors.

Project : CP 07-A-1A South
(QBC/C282/2014) QBC-HBK JV
Waterfront Commercial Infrastructure Works



The primary need for earthworks as a foundation for any civil engineering project has determined that earthworks is a major component of QBC's construction activities. Major construction quantities executed by QBC within the last five years include earthworks volumes of more than 7,000,000 m³

EARTH WORKS



QBC's equipment fleet includes more than 100 excavators, 30 trenchers / road miners, 200 tipper trucks/trailers and 60 wheel loaders



TRENCHING WORKS



Project : BP-1B-04 QBC-Carillion JV
Msheireb Downtown Doha



Client : Msheireb Properties ,Value : QR 2,370.77million
Substructure and Superstructure Works for
Residential, Retail & Office Buildings Phase 1B



Construction of 13 No. new mixed-use buildings
in Downtown Doha, from raft slab upwards :

- Total floor plate area of 23,000 m² ● 3 No. basement levels
- Variable building height up to 9 No. levels above ground
- All associated MEP and finishes ● Landscaping, hardscaping and roads



BUILDINGS





Photo: Mohammed Zuber Shaikh

Client : AWQAF
(The Ministry of Endowments and Islamic Affairs)
Value (QR million) : 22.00

PRODUCTION DIVISION

“Supporting Contractors with quality & on-time delivery”

QBC Production adheres to the toughest international standards to deliver the best construction materials to Qatar's biggest projects.



■ READYMIX PLANTS ■ ASPHALT PLANTS ■ PRECAST PRODUCTS ■ STEEL ENGINEERING WORKSHOP ■ CRUSHERS ■ ROAD MARKING





As one of the first readymix companies established in Qatar, QBC takes pride in producing the highest quality concrete in every batch. This fact is substantiated by ongoing product quality testing by our laboratories equipped with modern facilities, and equipment, and backed up by third party testing where required



READYMIX PLANTS

With 8 No. batching plants at five different locations in Qatar, QBC Readymix concrete production capacity exceeds 70,000m³ per month. QBC's ongoing contract requirements, as well as providing a concrete delivery service for partners and end users









QBC's four asphalt plants are able to produce a combined total of 8,500 tons per day.



Premier Asphalt

QBC Asphalt Plants are each designed to produce asphalt up to airfield quality. With certified engineers and fully-trained personnel, QBC is the trusted supplier of asphalt and PMB Asphalt. We ensure the highest quality end-product complying with today's exacting construction standards. Both stationary and mobile plants as well as a fleet of supply and delivery trucks give QBC clients the option for the most convenient facilities that suit any project



ASPHALT PROJECTS

QBC Roads Division is one of Qatar's leading suppliers of road surfacing materials including :
Asphalt base course, Asphalt wearing course,
PMB asphalt, Bituminus prime coat, Tack coat





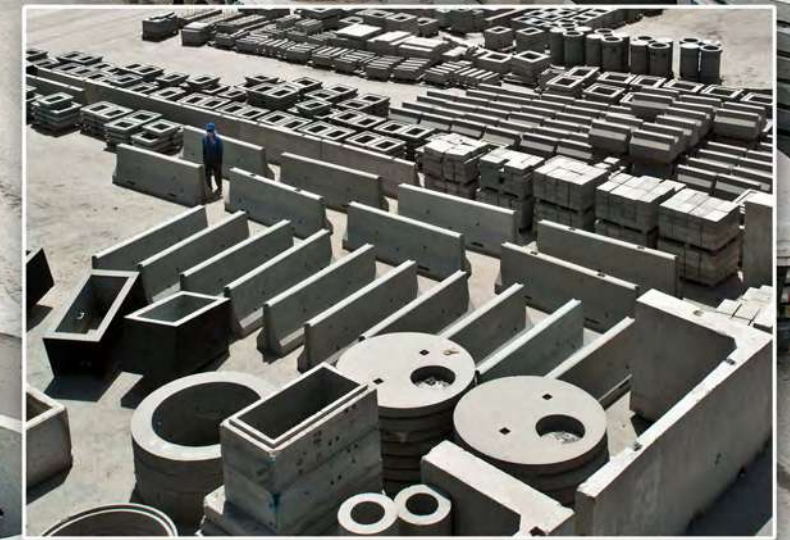


- Blocks & Foundations
- Car/Wheel Stoppers/Kerbs
- Catch Pit Chambers / Link Boxes
- Concrete Bollards
- Gully Pots & Cover Slabs
- Joint Bay Culverts
- Manholes
- Manhole Cover Slabs
- Marker Posts
- New Jersey Barriers
- Paving Slabs
- Pipes
- Soakaways / Soakaway Rings
- Spacers & Pipe Support
- Stairs
- Valve Chambers
- Vehicle Barrier Units

PRECAST PRODUCTS

Precast with Precision

QBC Precast has the widest range of manufacturing capabilities both in standard production and made-to-measure. As a local manufacturer; We deliver faster, more cost-effectively and in bigger quantities



PRECAST PRODUCTS

With the latest manufacturing technologies and an extensive range of mix designs, our precast is suited for long-term performance requirements



Steel Engineering Workshop provides a full range design and engineering service by using the latest technology with a fully equipped production lines. Cost effective and high quality service is the motto of the skilled and experienced team.





Water Cutting Machine

The top precision and the top quality of the water cutting technology for a wide variety of materials
Operation Capacity : Sheet size : 2000 x 3000 mm.
Material Thickness : up to 80 mm.
Cutting Speed : 0-15 m/min,CNC Control : SEMYX



CNC Plasma & Oxy-Fuel Cutting Machine

The power of Hypertherm 400 x D make a steel profile cutting like the artwork Operation Capacity :
Sheet size : 3000 x 6000 mm. Material Thickness :
Mild Steel : up to 50 mm, Stainless Steel : up to 38 mm,
Aluminum : up to 38 mm.



STEEL ENGINEERING WORKSHOP

Facilities at the workshop are used in the fabrication of precision formwork required by our Precast Concrete Division for casting a wide range of precast concrete products such as road-edge kerbs



Steel products fabricated at the workshop provide essential back-up to our ongoing contracts, including the fabrication of :

- Cylindrical formwork for construction of manholes
- Specialist parts for DI pipe installations such as blind flanges/end caps, spools, collars, flanges etc
- Spreader beams
- Trench bridges and many more





Salama Road Marking Factory (Salama RMF) is a specialized road marking paint manufacturing company founded in 2014 to justify the basic of thermoplastic road marking paints in State of Qatar. Our company and team are fully committed to provide all products and services strictly as per the specification requirements and expectations of our customers. Our QA QC laboratory is well equipped with latest technology automatic and semi-automatic essential testing and also perform all necessary tests for glass beads. We have strict control over roundness, particle size distribution, refractive index and chemical resistance tests. Salama Road Marking Factory has ISO 9001:2015 certify





QBC Crushers Quality from Qatar's Quarries

QBC Crusher produces and supplies coarse and fine aggregates, gravel materials, sub-base materials and bedding materials, as required for projects. The technical quality of our product depends on the optimal combination of client requirements, existing conditions, product end-use and obligation towards sustainable quarrying and the surrounding environment. QBC Crusher production capacities exceed 1,000 tons/day

Clients include all types of concrete producers, pavement and asphalt contractors, as well as infrastructure contractors. With one permanent plant and several mobile crushing units, services can be provided at any site.



TRADING DIVISION

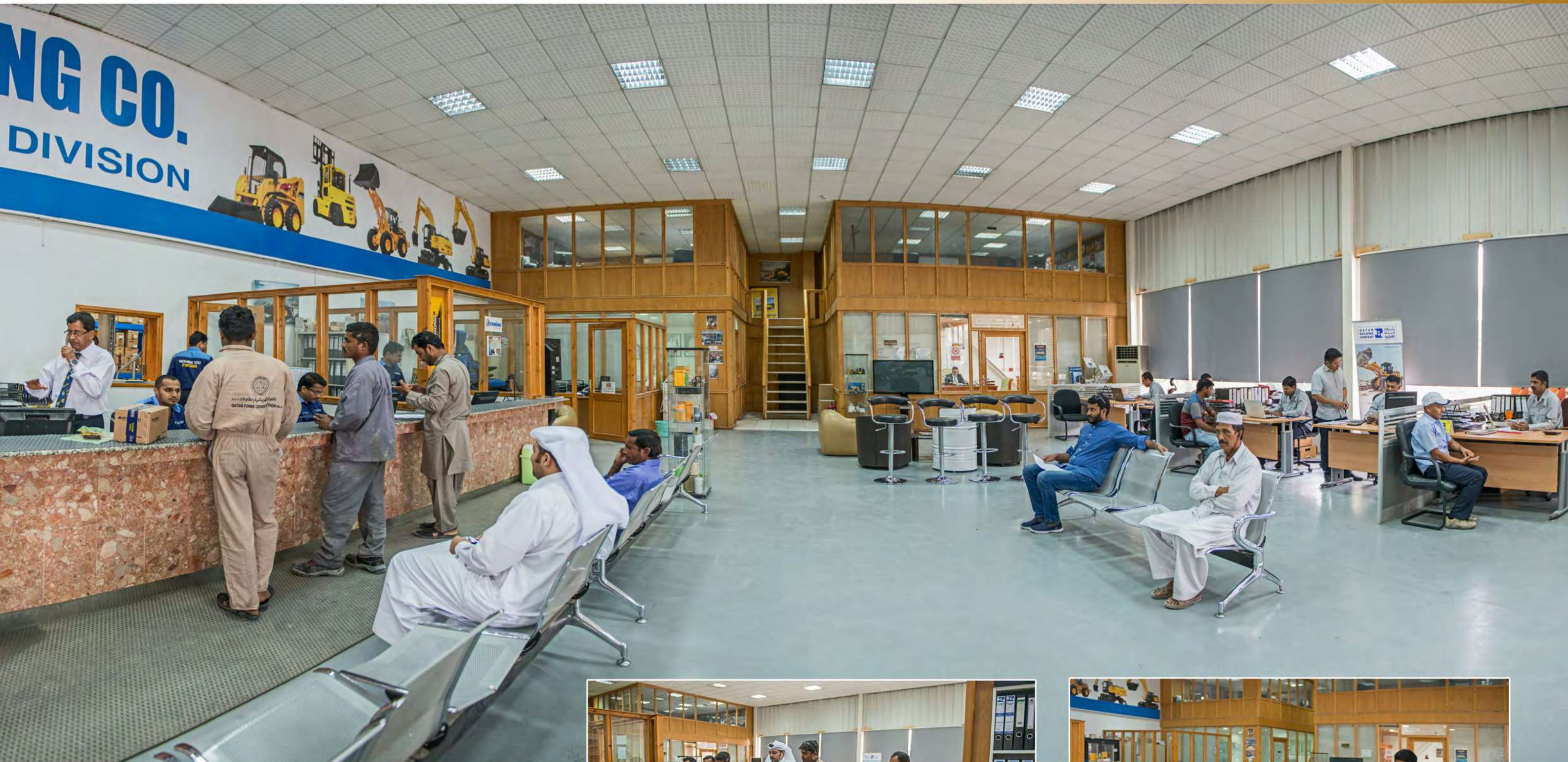
“Contractors’ choice for construction equipment”

QBC Trading provides the construction equipment, spare parts and after-sales service from the most trusted brands around the world. With warehouses of spare parts, a 24-hour hotline and mobile service centers, contractors rest assured that projects are supported until completion.



HEAVY EQUIPMENT DEPARTMENT ■ LIFTING DEPARTMENT ■ MEDIUM,LIGHT EQUIPMENT & ATTACHMENTS ■ AFTER-SALES DEPARTMENT & SPARE PARTS





QBC's Heavy Equipment Department supplies the local market with first rate construction and other specialist equipment from some of the biggest brands in the market. Top class after-sales service and adequate spares' stockpiles ensure that QBC Heavy Equipment customers experience minimum downtime and maximum efficiency. The range of equipment is vast, extending from large excavators to mini excavators, forklifts to loaders, concrete mixers to rock breakers and grabs & grapples to material handling equipment.

**HYUNDAI Construction Equipment**

Since starting out in the construction equipment business in 1985, Hyundai Construction Equipment Department has emerged as a world-class total construction equipment producer. Following intensive research and development to gain sophisticated manufacturing skills and advanced technology, the department over the years has developed its own extensive line of construction equipment models including excavators, wheel loaders, skid steer loaders, forklifts and more.



Heavy Equipment Department
has exclusive dealership of world renowned brands like :

Hyundai Construction Equipment / Korea (Vast Range
of Wheel Loaders, Crawler and Wheel Excavators
Skid Loaders, Backhoes, & Heavy Rollers)

Daemo Engineering Co. / Korea (Hydraulic Breakers)

Weber MT / Germany (Vibrating Plates, Wake Behind Rollers,
Tamping Rammer, Pavement, Concrete Saw and Power Trowel)

Pramac / Italy (Tower Lights and Generator)

Simex / Italy (Double Rotary Cutter & Heavy Equipment attachments)

EIK Engineering / Malaysia (Vast range of attachments)

M3 Metal Meccanica / Italy (Sweepers and brushes)

Socomec / Italy (Hydraulic Silenced Hammers)



QBC's Lifting department is committed in supporting the industries of Qatar through its impressive portfolio of products & services. HED Lifting department has exclusive dealership of world renowned brands like:

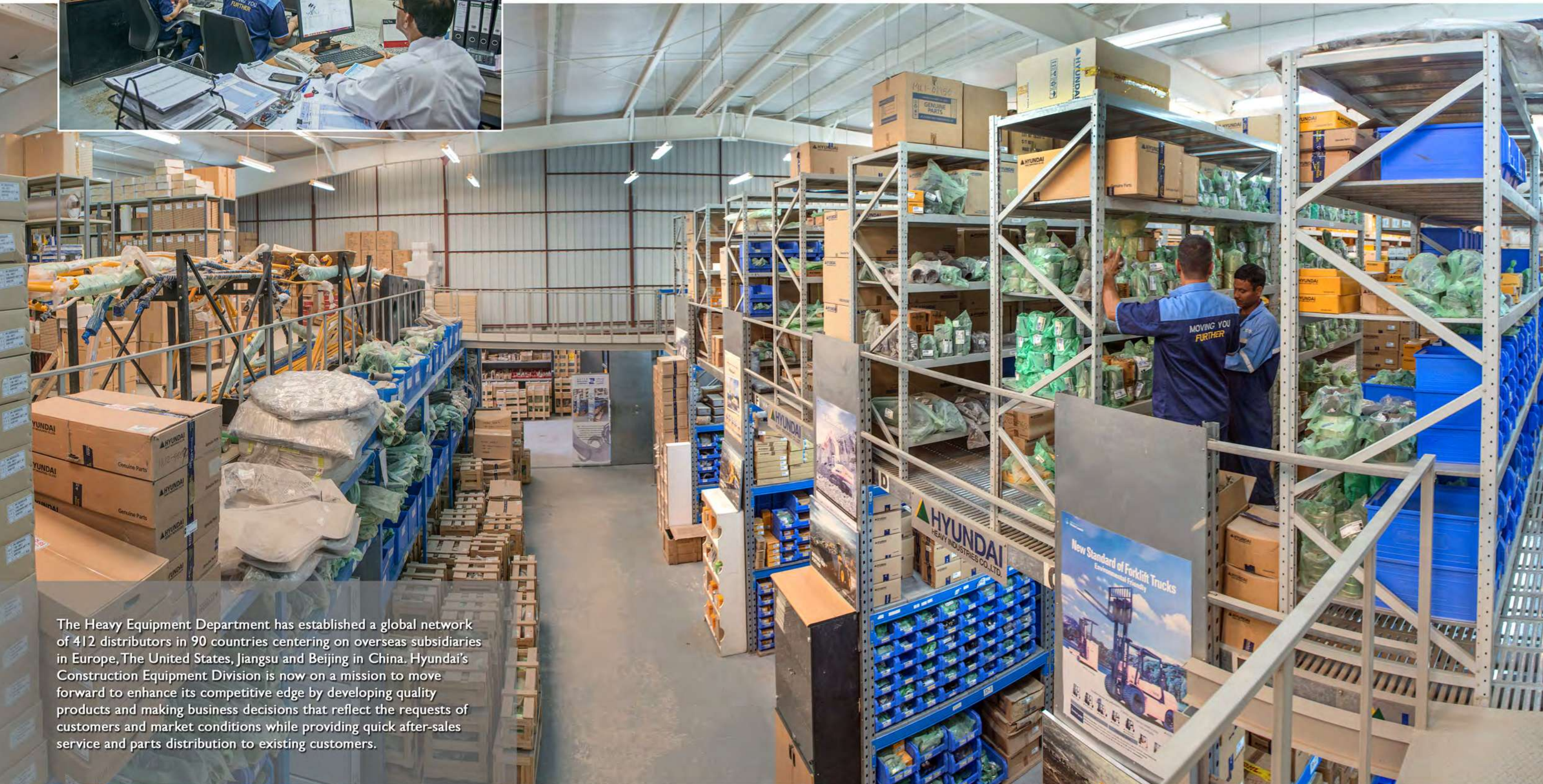
- **Hyundai** Material Handling Equipment / Korea (Electric,Diesel Petrol,Gas Powered Forklifts, Order Picker & Reach Truck)
- **Manitou** / France (Rough Terrain Forklift,Articulated Forklift, Telescopic Forklift, Man lift, Scissor lift & Access Platform)
- Lifter by **Pramac** / Italy (Manual,Electric Pallet Trucks & Stackers).



Variety for your Convenience
From power generation to lightweight equipment, QBC provides the one stop for contractors' needs.



Medium-Light Equipment	Power Generations	Attachments
Compactors	Generators	Breakers
Concrete asphalt cutters	High pressure cleaners	Buckets
Pumps	Tower lights	Clamp shells
Rollers		Demolition attach
Saw cutters		Long-reach booms
Self loading concrete mixers		
Skid loaders		
Tires		
Vibrators		



The Heavy Equipment Department has established a global network of 412 distributors in 90 countries centering on overseas subsidiaries in Europe, The United States, Jiangsu and Beijing in China. Hyundai's Construction Equipment Division is now on a mission to move forward to enhance its competitive edge by developing quality products and making business decisions that reflect the requests of customers and market conditions while providing quick after-sales service and parts distribution to existing customers.

Customer satisfaction and optimal machine performance are what our Spare Parts department strive for by providing large storage facilities, reliable service and readily available stock. Approximately 97% of all Hyundai spare parts are continuously in stock. Hyundai machines can be fitted with different types of buckets, mast, forks or any other attachment. At our Parts Department we are ready to supply the attachment needed for your application.





QHSE Quality, Health, Safety & Environment

“QBC’s Integrated Management System”

With the launching of QBC’s new Integrated Management System, QHSE became top priority. As such, our company culture is embedded with a focus on maintaining quality, health, safety and environment in every operation.



■ QUALITY & ACHIEVEMENTS ■ HEALTH & SAFETY ■ TRAFFIC MANAGEMENT ■ ENVIRONMENT

QBC Targets to operate all running projects with ZERO HARM



INTEGRATED MANAGEMENT SYSTEM POLICY

(QUALITY, HEALTH, SAFETY AND ENVIRONMENT)

The management of Qatar Building Company is committed to implement and maintain an Integrated Management System compliant to ISO9001:2008, OHSAS 18001:2007, ISO 14001:2007 and ISO 29001:2010 standards. To achieve this, the company has established its own objectives and will review them periodically to ensure the continuing suitability for its purpose. The IMS Policy of the company is to embrace quality as the benchmark for all of its construction and contracting services and to integrate Health, Safety and Environment characteristics into the scope of its business, thereby leading the way to continual improvement. Customer satisfaction, superior health & safety for staff and public protection of the environment are the key milestones. We intend to achieve by complying with legal and other applicable requirements and committing ourselves to Quality, Health, Safety & Environment Standards

QBC IS COMMITTED TO

Defining plans & deliverables against the expected quality output. Upholding consistency in its objectives while incorporating new changes for future challenges. ● Providing adequate resources to achieve objectives. ● Promoting IMS standards throughout their business processes and project execution. ● Promoting a sense of responsibility in QHSE among all staff working for, and on behalf of QBC. Treating employees as "Important Assets" of the company and therefore making all necessary effort to ensure that their health and safety is given utmost priority by providing healthy and safe living facilities and working environment. ● Ensuring the public is safeguarded from any hazards and risks present in and around projects. ● Continuously improving HSE by carrying out potential risk assessments, minimizing waste and optimizing the use of resources through the three "R's" concept (Recovery, Reuse and Recycle) ● Ensuring a continuous and effective means of communication on all matters of Quality, Health, Safety and Environment within the company and with external interested parties. ● Investing in Corporate Social Responsibility through community outreach programs. ● Adhering to sustainable engineering and best business practices. ● This policy will be communicated within our staff and interested parties.

**Occupational Health & Safety Management**

BS OHSAS 18001:2007 - Reg. No. 00799/0 (2012)

QBC complies with international standards to identify, control, and reduce the risks associated with workplace healthy and safety. Implementing this framework demonstrates QBC's concern to protect employees and the general public.

**Environmental Management** ISO 14001:2004 - Reg. No. 00799/0 (2012)

QBC complies with international standards to identify, control, and reduce the risks associated with workplace healthy and safety. Implementing this framework demonstrates QBC's concern to protect employees and the general public.

**Quality Management** ISO 9001:2008 - Reg. No. 12492/0 (2012)

Enhancing customer satisfaction, implementing continuous improvement, and ensuring conformance to industry regulations are the reasons QBC pursued this certification – quality as the overall aim.

**Product & Service Management** TS ISO 29001:2010 - Reg. No. 00020/0 (2012)

QBC complies with the sector-specific Quality Management System defined for product and service supply organizations for the petroleum, petrochemical, and natural gas industries.



Competent, dedicated and experienced Health and Safety Team makes sure company's H&S Management System, Qatar Construction Specification and industry best practices implemented on field. QBC believes communication with the workforce is key factor to develop Health and safety culture in the company.



Public Safety

Public safety is as much a concern as employee safety. QBC goes to great lengths for proper housekeeping and to ensure traffic diversions are clearly marked and adhere to local regulations. Signage is well-lit and carefully coordinated to keep public fully informed. During rush hours, personnel are posted at crossways to direct traffic and help control vehicular speed.



Emergency Response Team (ERT) of the company ready to response all kind of emergencies 7/24. ERT Members receive regular trainings for special tasks to handle emergencies professionally. QBC conducts regular emergency drills in order to maintain skills of the ERT members and awareness of employees of the company



Employees health is one of the important focuses of Qatar Building Company. QBC establishes approved clinics / first aid station at their running projects and operate those 7/24 with and registered doctor/s and nurse/s. QBCorganize campaigns in order to monitor employees health regularly.





QBC has specialized Traffic Management Team to serve its running projects. Traffic Management Team members are well educated, experienced and equipped in order to implement and maintain Work Zone Traffic Management Guide requirements on the temporary traffic diversions. Public safety is top priority for Qatar Building Company.



On-site Waste Segregation & Recycling

To combat climate change, QBC minimizes the impact of operations. Waste is segregated at every site, smashed to reduce space and sent to all possible recycling destinations in Qatar.



QBC has launched a QSAS training and certification program for all project managers. This rating system supports Qatar's ongoing effort to address specific regional needs in creating a sustainably





QBC thanks organizations and members of the community for their gestures of gratitude. We are humbled by their recognitions and mindful of our responsibility to play a role in our society's development.





P.O Box 1985, 306 Airport Road, Doha, Qatar
T: +974 4462 5555 / 56 F : +974 4462 5522 / 44
E : qbc@qbcqatar.com.qa W : www.qbc.qa